

# An Introduction to Local Care Partnerships

#MakingStuffBetter for people in Leeds

# Volition / Leeds Older People's Forum

Forum Central is a network of health and social care third sector organisations in Leeds delivered by the partnership of:



# Forum Central

## *Our Mission*



- Our mission is to be a collective voice for the health and care third sector
- Our combined membership stands at almost 300 third sector organisations working across Leeds – large and small with membership open to all third sector organisations working in health and care in Leeds.
- Forum Central supports and represents the diverse third sector working with health and social care needs in Leeds; we promote and support partnership working across the city and provide information for and about the sector.

# Forum Central

## *Our Mission*



- All our activities are informed, driven and led by our members and our Boards of Trustees.
- Member organisations are supported through sharing good practice, networking and partnership opportunities, and are kept informed about what is happening across our specialist areas and the wider health and care agenda.
- We bring a long history of strategic partnership working and work closely with our health and care partners including Leeds City Council, NHS Leeds CCG, the three NHS trusts, public health colleagues as well as our third sector infrastructure partners.

# Forum Central

*Our Vision*



**Our vision is a better quality  
of life for people in Leeds.**

## Our Work and Specialisms

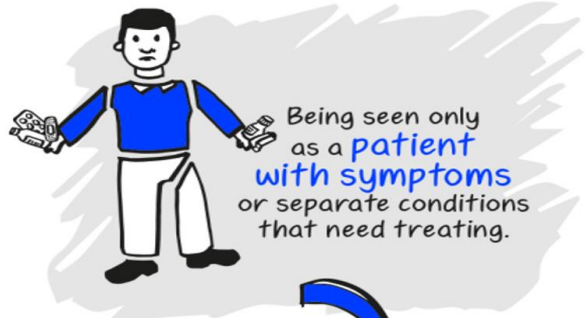


- **Health and Care**
- Mental Health
- Older People
- Learning Disability
- Physical and Sensory Impairments
- Local Care Partnerships
- Communities of Interest

# The NHS Long Term Plan



- Improving population health
- Improving care outside of hospitals (primary and community services)
- ‘fully integrated community-based healthcare’ to meet the needs of a changing population

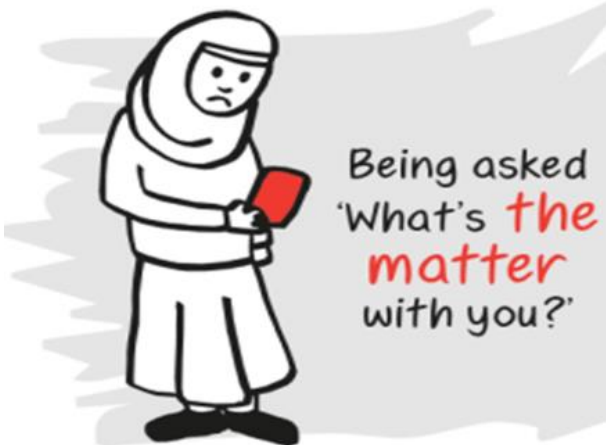


SHIFTS TO...



# 'shared responsibility for health'

**Personalised Care:** A shift in relationship between health and care professionals and people.



SHIFTS TO...







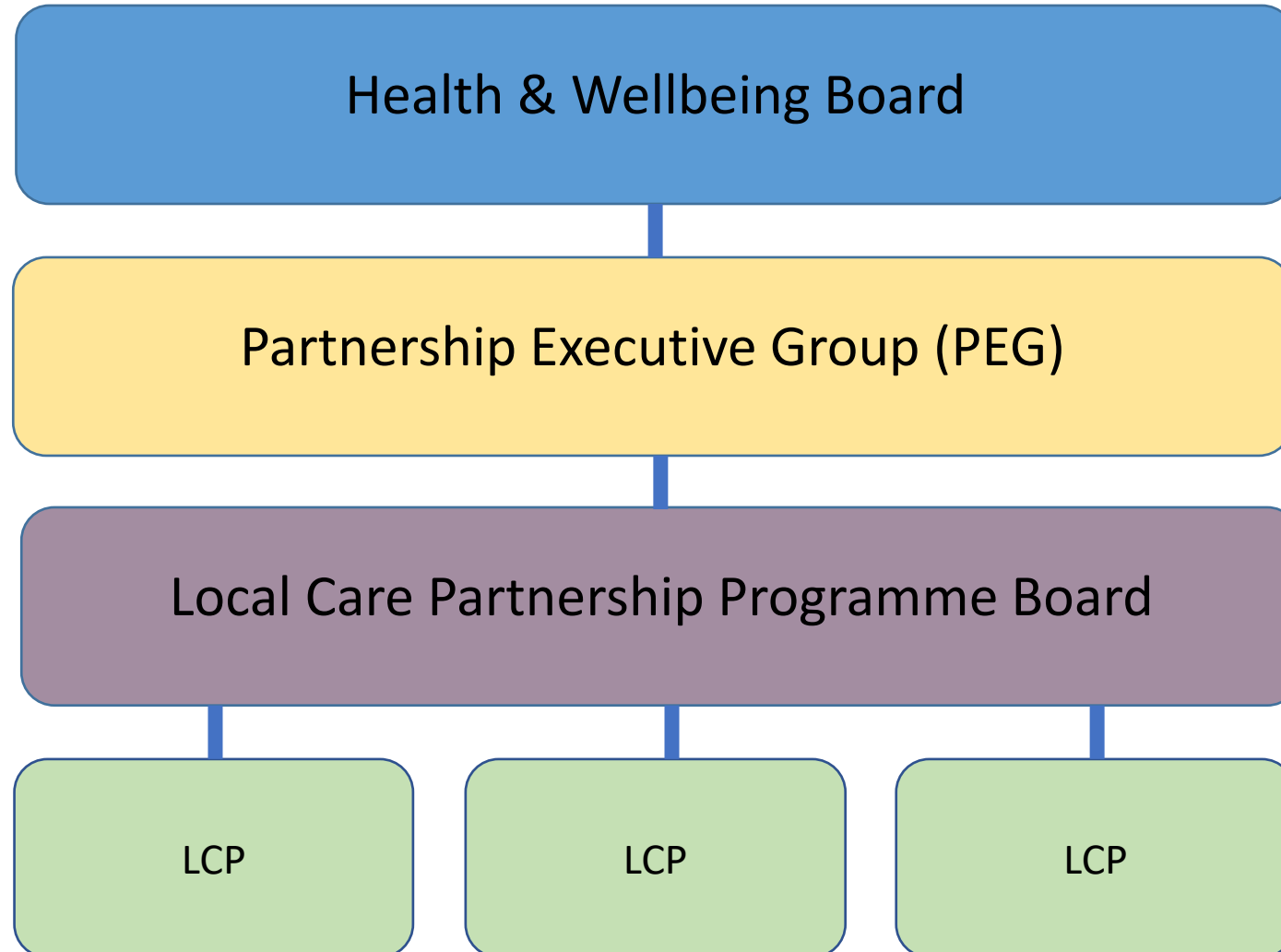
# Partners involved in an LCP may include:

- Primary Care
- Secondary Care
- Public Health
- Social Care
- Third sector
- Social Prescribing
- Healthwatch
- Housing
- Elected members
- Employment services
- + LCP development team





# Current LCP Governance




# What have the LCPs achieved so far?

- Brought different parts of the system together
- Relationship building and peer support
- Shared roles – Care Coordinators in HATCH, Seacroft and LS25/26
- Joint Bidding – including successful bids lead by Third Sector Partners
- Delivery of the Population Health Management Programme
- Delivery workshops (e.g. winter planning, covid inequalities)



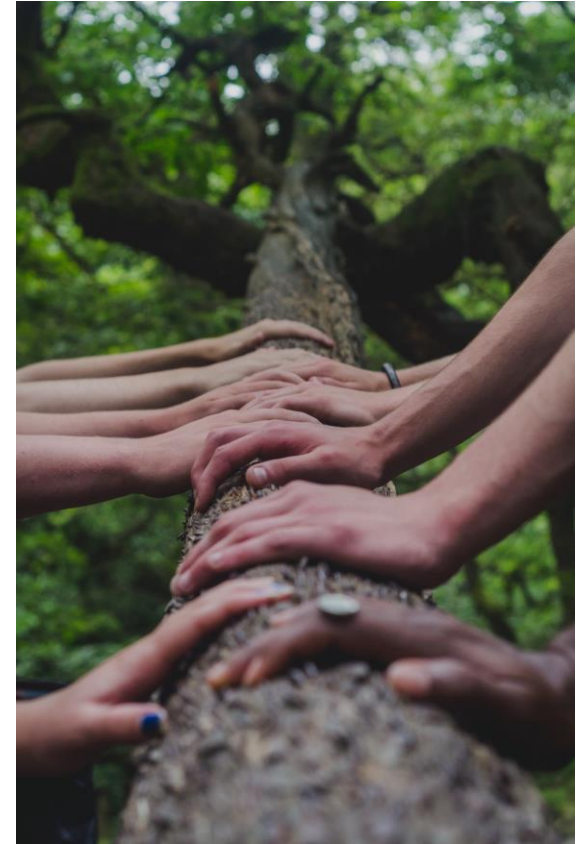
# The Future of the LCPs?



Integrated Care System	• West Yorkshire
Integrated Care Partnership	• Place/Leeds
Local Care Partnerships	• Local Delivery and local decision making – working together to meet people's needs

# Aspirations for the Local Care Partnerships

- Partnerships with communities
- Holistic, person centred, integrated care delivery
- Broad range of partners working together to tackle health inequalities in line with health and wellbeing strategy
- Local priorities flow from the ICS and ICP priorities with data and local intelligence informing local focus and delivery (top down meets bottom up?)



# Principles of working

- Flexibility within a framework
- One team ethos at LCP level (e.g. #TeamCrossGates, #TeamWetherby, #TeamB&M)
- Making effective use of our shared resources
- Impact for local people (and whether they think we are making a difference) part of how we evaluate success
- Mental health and public health hardwired into the approach as threads that run throughout

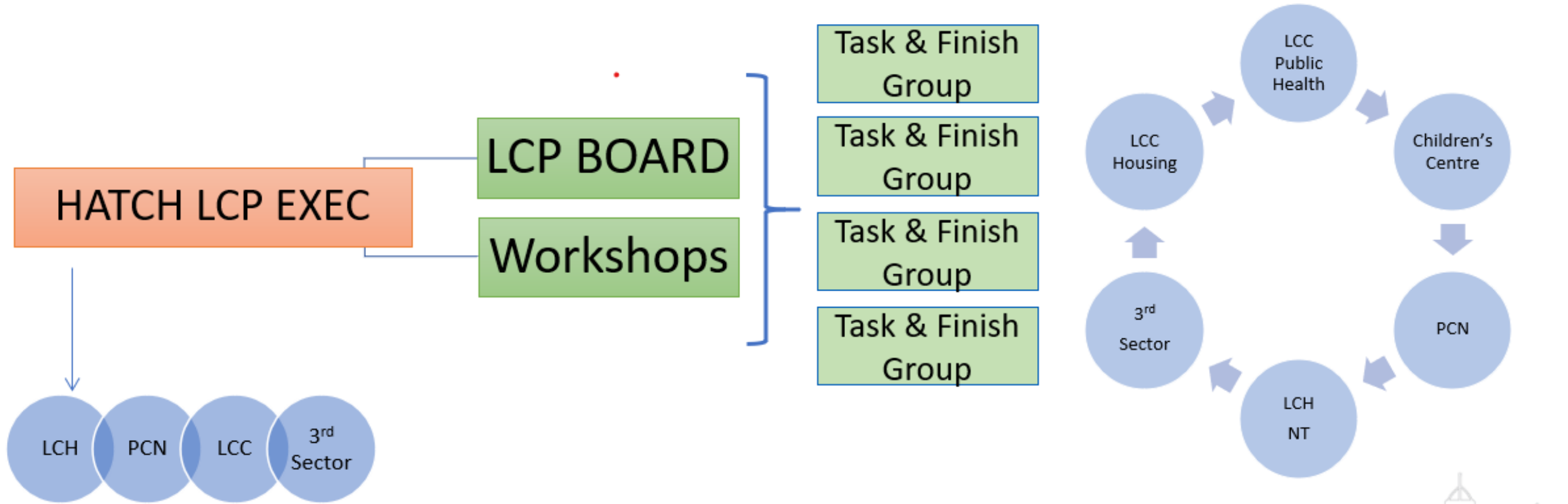


# A step change in LCP development

- Governance structures that support and enable decision making
- Totality of local resource understood and partners using this resource differently to reduce duplication and ensure that the right person provides the right support
- Strengths and asset-based approaches see all partners make left shift – all providers start with what can people and communities do for themselves



# How this might it look in practice



# Challenges, Opportunities & Considerations

- Do we (as a system) understand how to work together?
- How can partners serve the citizens within LCPs and not the other way around?
- How can the third sector work within the LCPs when organisations can't always be present?
- Where is the funding? Do they need funding?



**Any Questions**